

CHEMPUTE SOFTWARE

Personal Computer Software for the Engineering Industry

Chempute Software (Pty) Ltd

P.O.Box 856, Kloof, 3640, South Africa

Tel : Intl +27-31-7646840 Fax : Intl +27-31-7645934 Email :sales@chempute.com

How to Create and Import Backups of Isogen Projects and Styles FAQ

Question:

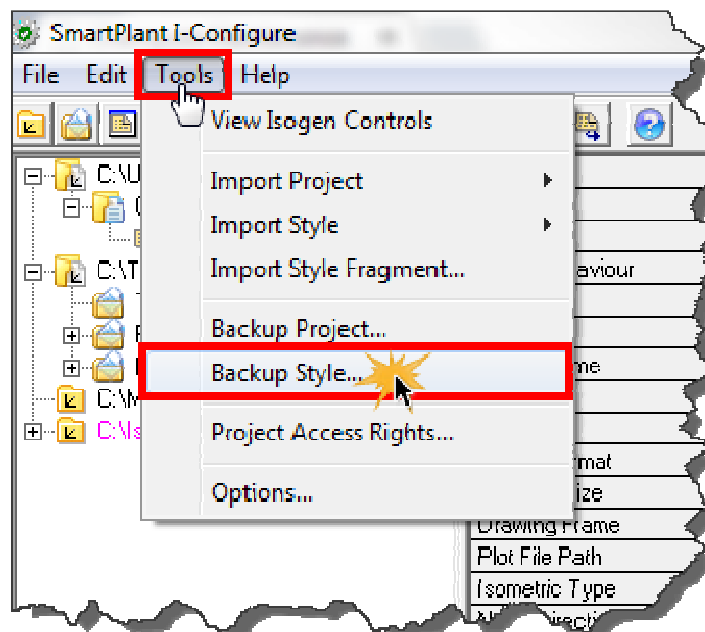
Is there an easy way to create a backup of Isogen Isometric Projects and Styles?

Answer :

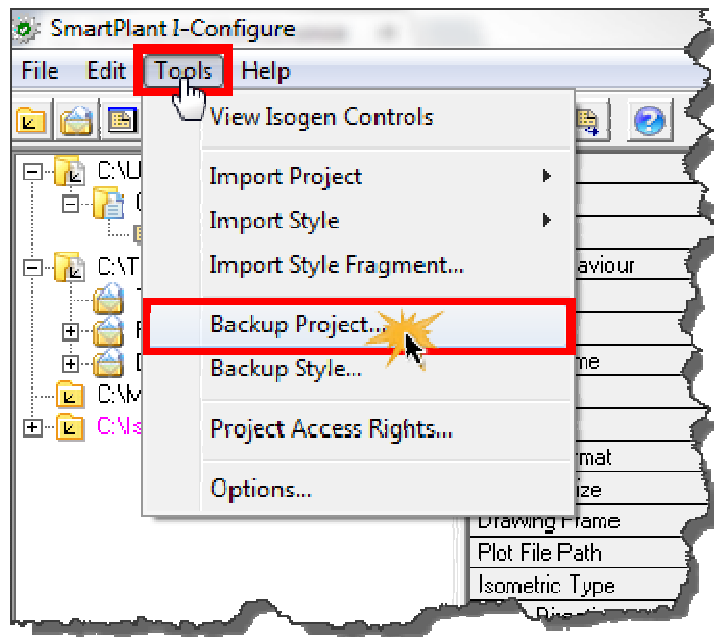
Backups of Isogen Projects and Styles can be easily created from within the I-Configure interface to ensure that these configurations are not lost due to a system crash. These Isogen Projects and Styles can be imported quickly, should they need to be restored, shared outside of an internal network or sent to a Support Technician.

Firstly, open CADWorx I-Configure and select the relevant Isogen Style or Isogen Project Directory to backup. Click on the "Tools" menu and from this menu the User has the option to elect to create a backup of an Isogen Style or Isogen Project.

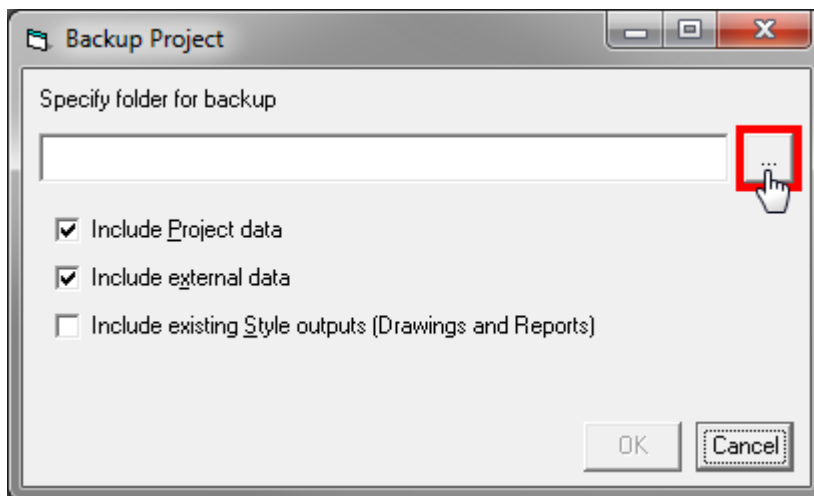
The "Backup Style" option will only create a backup of an individual Isogen Style within a Project Directory.



The "Backup Project" option will create a backup of the entire Project Directory containing all the Isogen Styles within that directory.



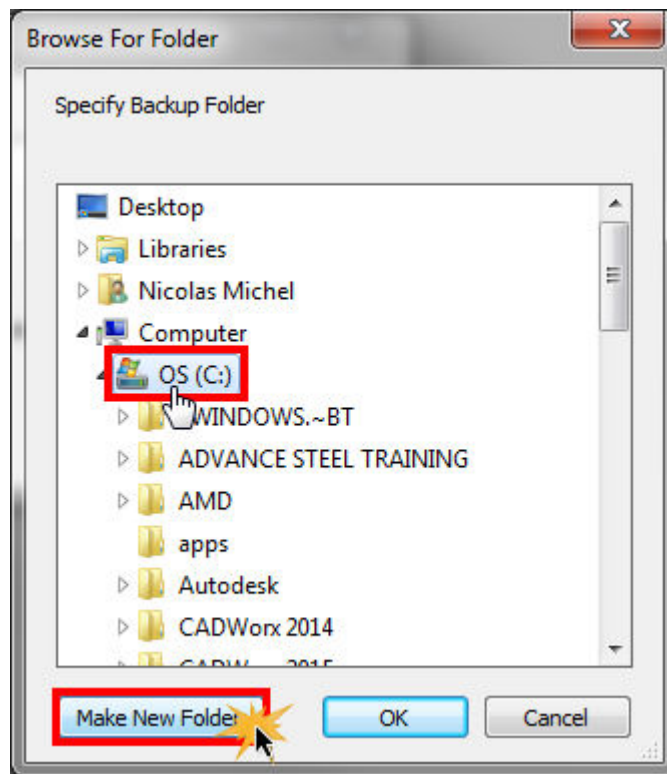
In this example, we will create a Backup of a Project Directory. In the "Backup Project/Style" menu, click on the "Browse" button as seen below.



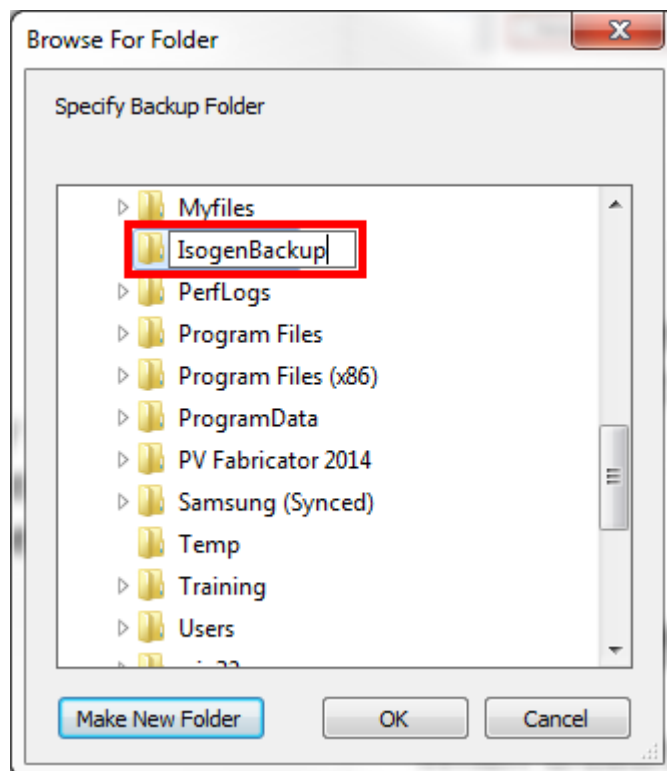
A directory now needs to be created in which to place your Isogen Project/Style backup. In this example the Backup Folder will be created in the following location.

C:\IsogenBackup

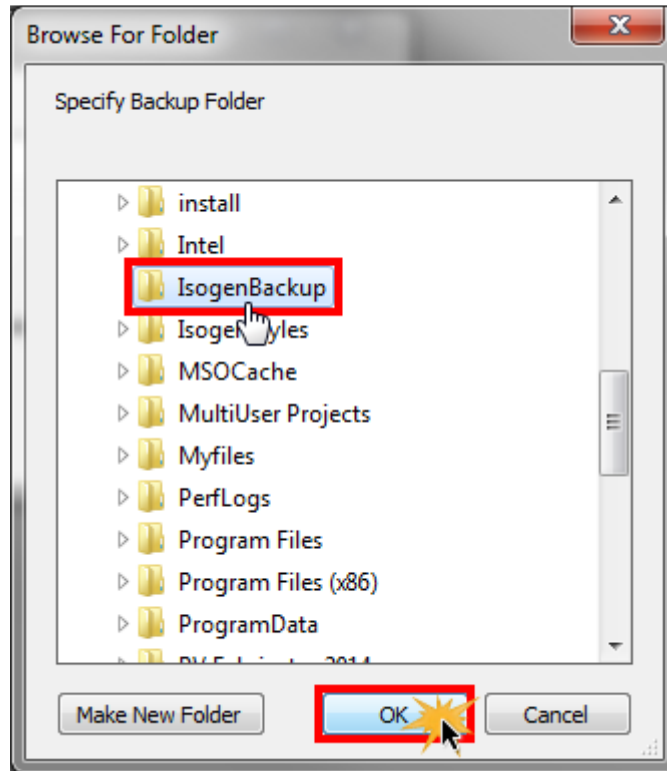
Browse to the relevant location and click on "Make New Folder" to create the backup directory



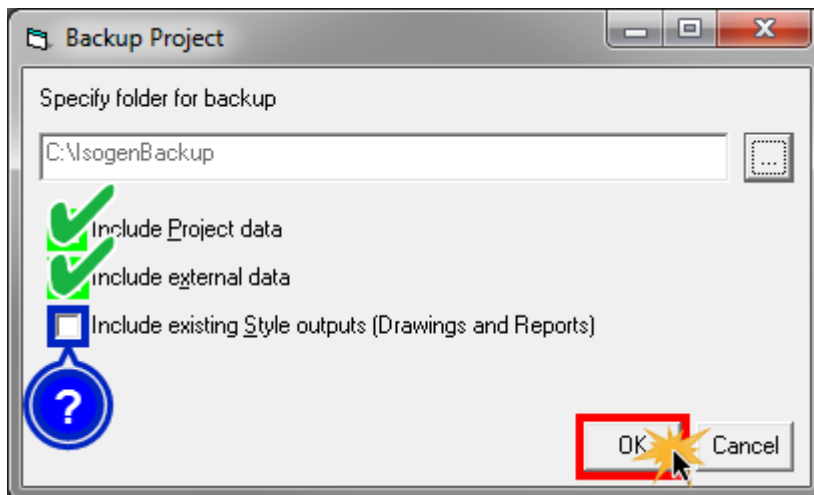
The backup directory can be renamed allowing it to be easily recognized when restoring the Isogen Project/Style.



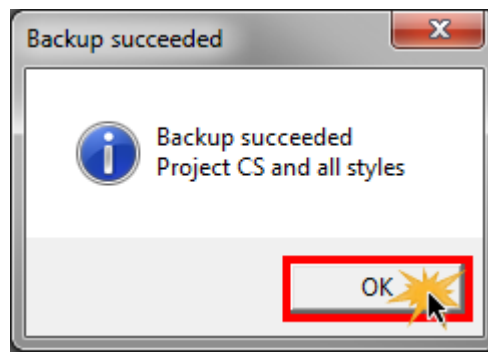
Select the created directory and click on "OK" as seen below.



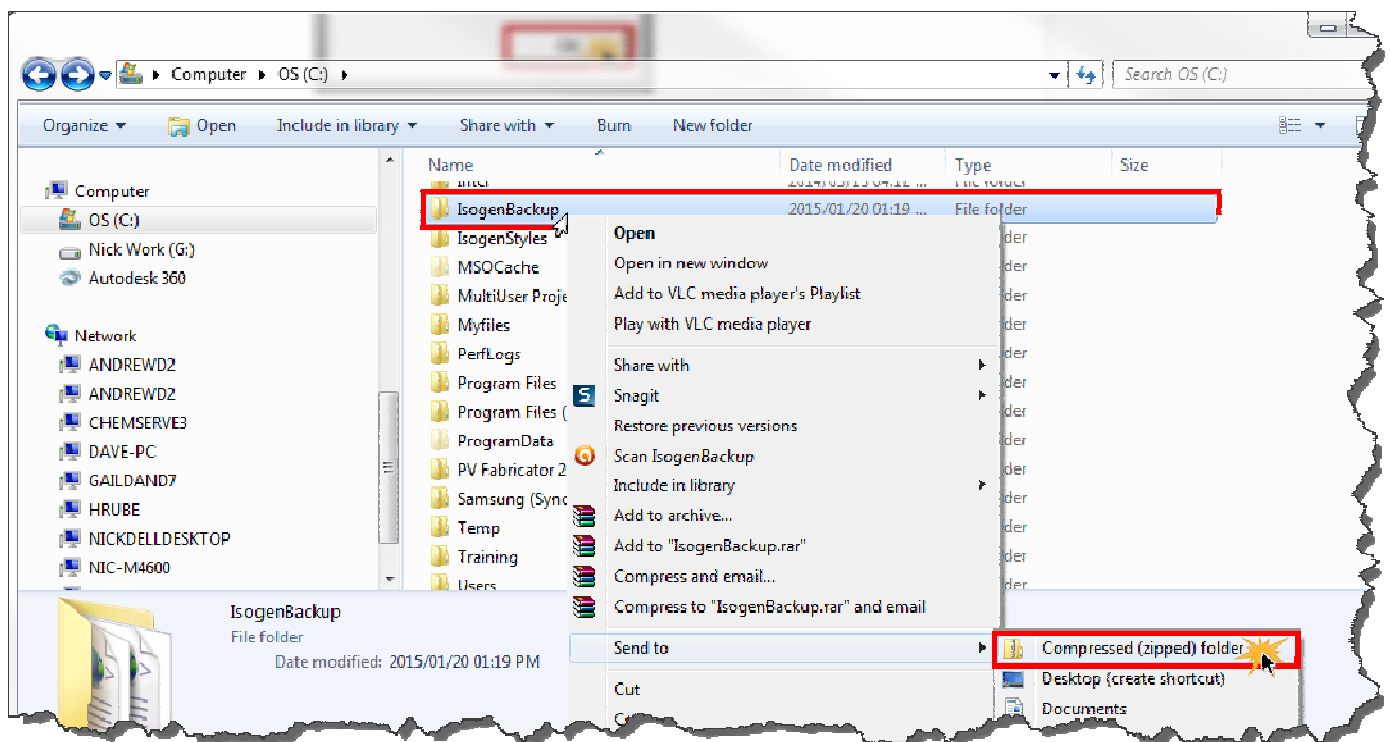
Ensure that "Include Project Data" and "Include External Data" is checked. If required, the User can "Include Existing Style Outputs" such as already generated Drawings and Reports, by checking this option as seen below. Click on the "OK" button once complete.



A message confirming that the Isogen Project/Style backup has been successfully created, should now appear. Click "OK" as seen below.

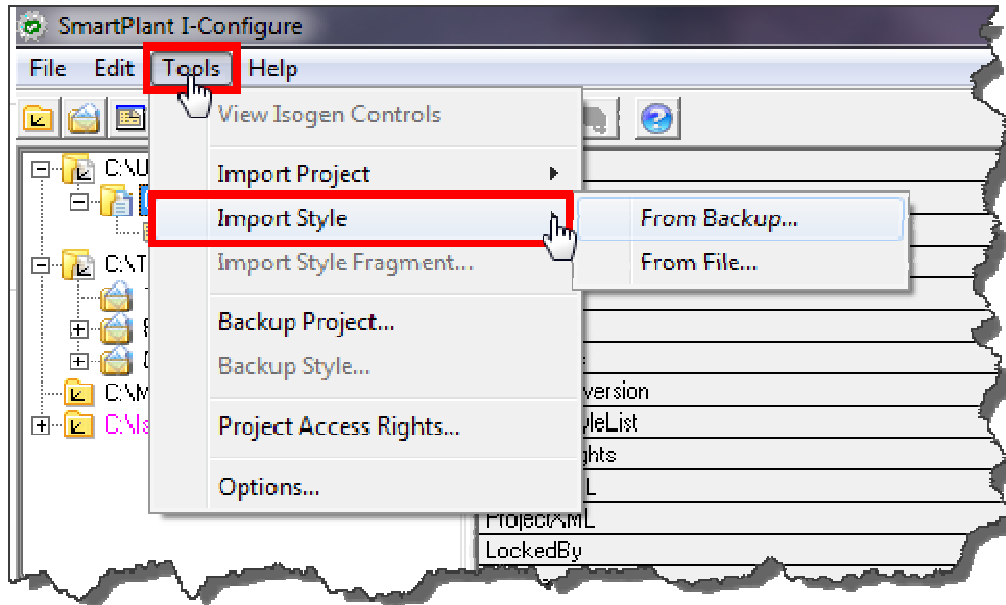


The project can then be restored to any location by the User. There is no need to create an empty Project or Style as the location paths defined in the created backup are generic and will automatically adapt to the new project location. **This Backup Directory can also be compressed into a ZIP file and sent to a Support Technician, should they require your Isogen Project/Style to reproduce an error or to review the relevant Isogen Style settings.**

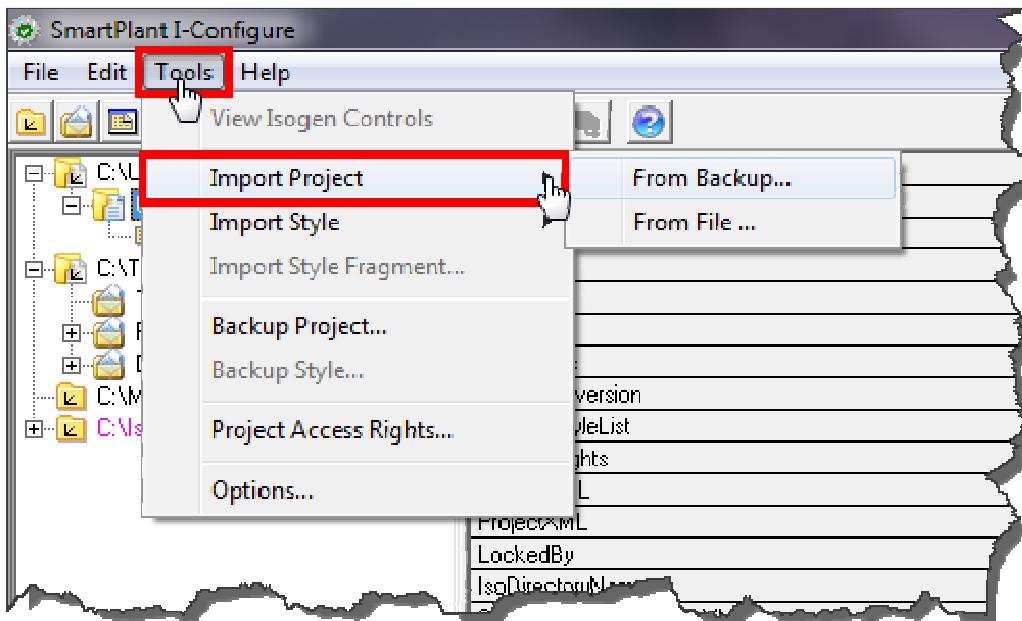


To restore this Isogen Project/Style in I-Configure, click on the "Tools" menu. From this menu the User has the option to elect to import a backup an Isogen Style or Isogen Project once again.

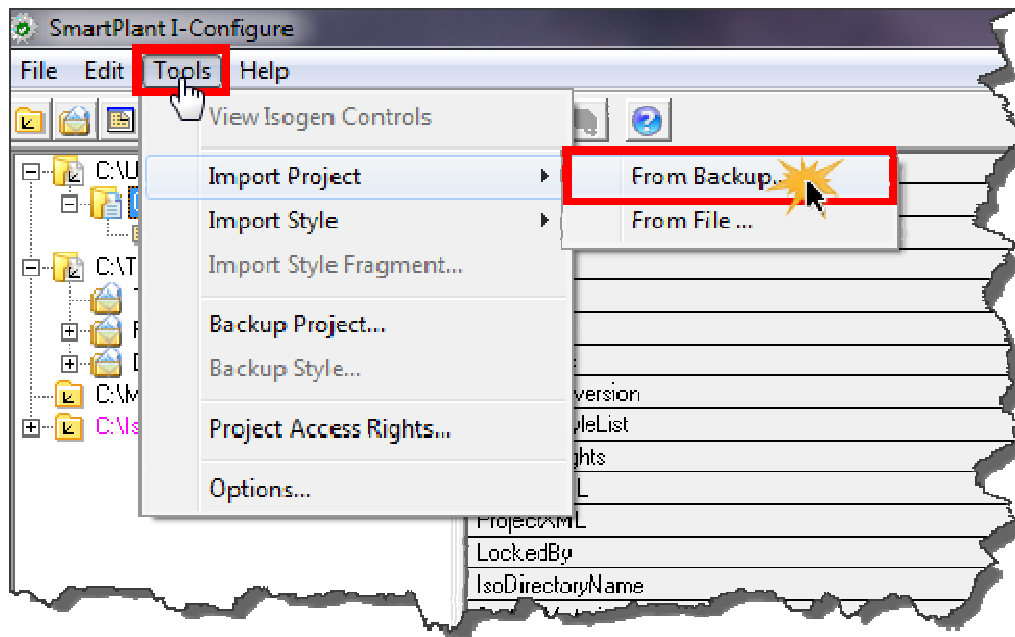
The "Import Style" option is for importing an individual Isogen Style.



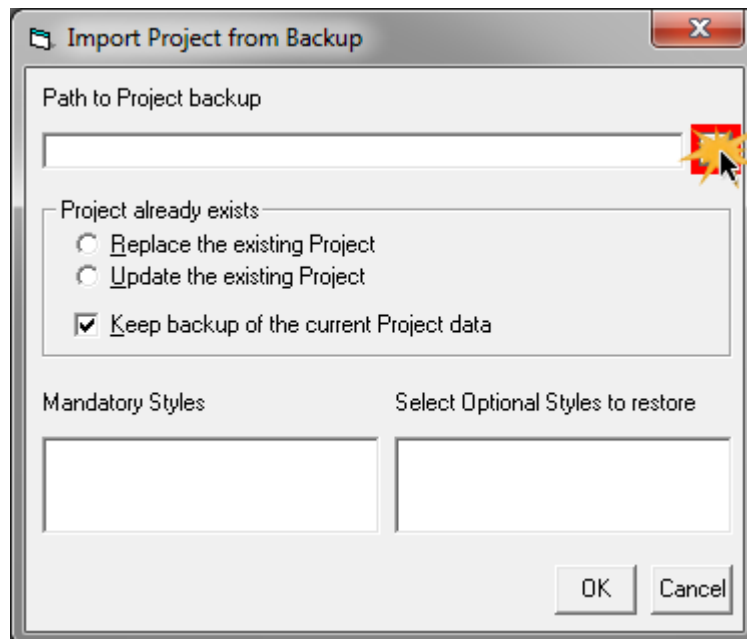
The "Import Project" option is for importing an entire Isogen Project directory containing a number of different Isogen Styles.



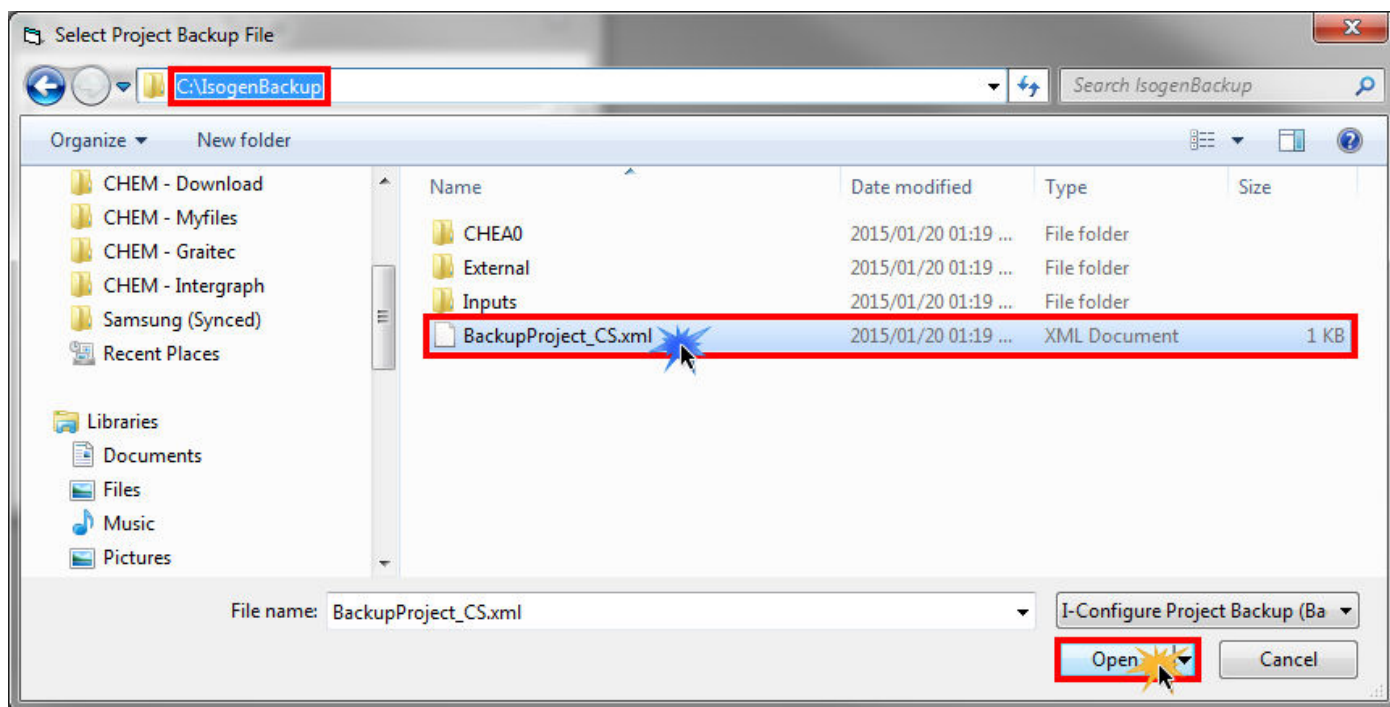
In this example, we are importing an Isogen Project. Click on the "Tools" menu, hover over "Import Project" and click on "From Backup" as seen below.



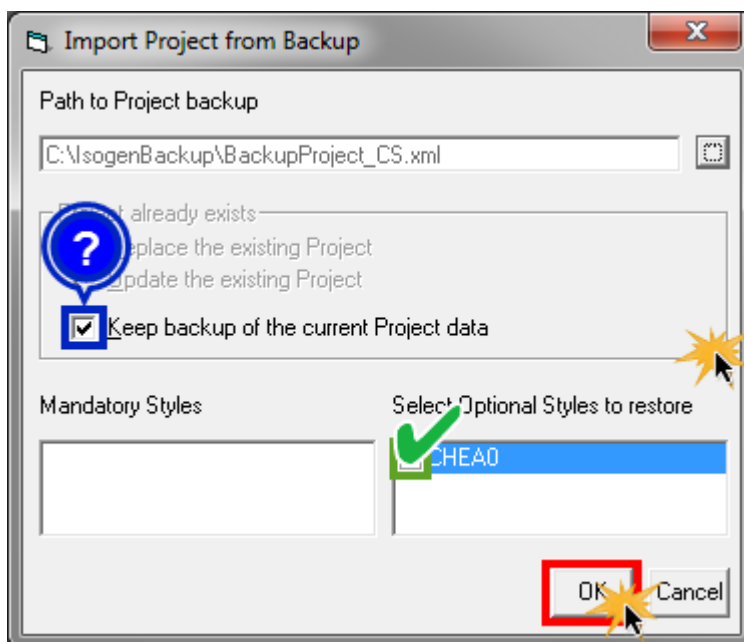
Next, in the "Import Project from Backup" dialogue, click on the "Browse" button as seen below.



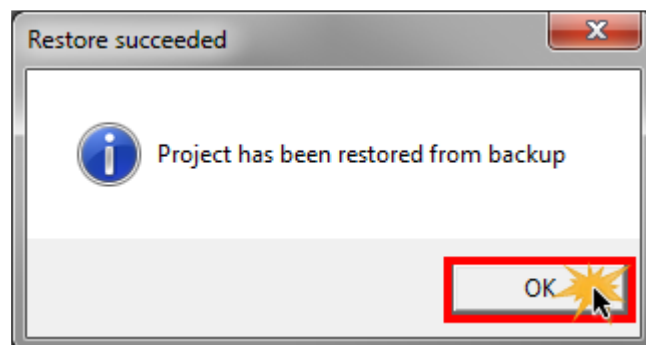
Browse to the Backup Directory where the Isogen Project backup has been created and select the Backup Project (*.xml) file. Next, click on "Open" as seen below.



The User will now have the option of whether or not the original backup should be kept after the Project/Style is restored. If restoring an Isogen Project containing multiple Styles, the User also has control over which Isogen Styles should be included or excluded from the import. Click "OK" once complete as seen below.



A message confirming the Isogen Project/Style has been restored correctly, will then be displayed. Click "OK" to continue.



The Isogen Project/Style will now be imported into I Configure.

Chempute Software (Durban)
Tel: 031-764 6840
Fax: 031 764 5934

Chempute Software (Johannesburg)
Tel: 011 803 6559
Fax: 011 803 6569

<http://chemputesoftware.blogspot.com/>

www.chempute.com